

Kickplate Installation Guide

DynaRound RG Slimline™ Kickplate Installation Details



HARDWARE REQUIRED (ONE OF EACH PER CONNECTION):

- PN 784200 hex nut 3/8-16**
- PN 785200 flat washer 3/8**
- PN 754530 hex hd bolt 3/8 -16x1-1/4**

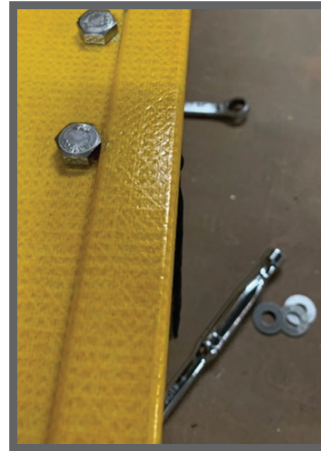
NOTE: Cuts and drilled holes must be sealed to maintain corrosion protection.

ASSEMBLY INSTRUCTIONS

1. Measure and mark the kickplate where desired connection to Slimline base will be.
2. Drill 7/16" bolt hole in kickplate.
3. Use nut/bolt/washer to connect fiberglass kickplate to Slimline base as shown in picture.

Kickplate Installation Guide

DynaRound RG RoofGuard Kickplate Installation Details



HARDWARE REQUIRED (ONE OF EACH PER CONNECTION):

- PN 784200 hex nut 3/8-16**
- PN 785200 flat washer 3/8**
- PN 754530 hex hd bolt 3/8 -16x1-1/4**

NOTE: Cuts and drilled holes must be sealed to maintain corrosion protection.

ASSEMBLY INSTRUCTIONS

1. Measure and mark the kickplate where desired connection to Slipper will be.
2. Drill 7/16" bolt hole in fiberglass kickplate.
3. Use nut/bolt/washer to connect kickplate to Slipper.
4. Do not use washer on outside of kickplate (see pic above). Use on nut side.



Phone: 972-250-1633
Fax: 972-250-1530



www.fibergrate.com



info@fibergrate.com

Fibergrate Composite Structures Inc. believes the information contained here to be true and accurate. Fibergrate makes no warranty, expressed or implied based on this literature and assumes no responsibility for consequential or incidental damages in the use of these products and systems described, including any warranty of merchantability or fitness. Information contained here is for evaluation only.

©Fibergrate Inc. 2020 - DynaRound-RG-Kickplate-Installation-Instructions.pdf

